

Chem-Impex International, Inc.

Tel: (630) 766-2112

E-mail: sales@chemimpex.com

Shipping and Correspondence:

935 Dillon Drive

Wood Dale, IL 60191

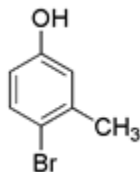
Fax: (630) 766-2218

Web site: www.chemimpex.com

Manufacturing site:

825 Dillon Drive

Wood Dale, IL 60191



Product Specifications

Catalogue Number 27863
Product **4-Bromo-3-methylphenol**

4-Bromo-*m*-cresol

2-Bromo-5-hydroxytoluene

CAS Number 14472-14-1

Molecular Formula C₇H₇BrO

Molecular Weight 187.04

Appearance White solid

Melting Point 55-62 °C

Purity by GC ≥ 97%

Storage Store at 0-8°C

For Laboratory Use Only