

Chem-Impex International, Inc.

Tel: (630) 766-2112

E-mail: sales@chemimpex.com

Shipping and Correspondence:

935 Dillon Drive

Wood Dale, IL 60191

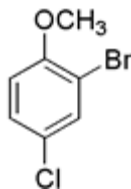
Fax: (630) 766-2218

Web site: www.chemimpex.com

Manufacturing site:

825 Dillon Drive

Wood Dale, IL 60191



Product Specifications

| | |
|--------------------------|--|
| Catalogue Number | 27857 |
| Product | 2-Bromo-4-chloroanisole 2-Bromo-4-chloro-1-methoxybenzene 2-Bromo-4-chlorophenyl methyl ether |
| CAS Number | 60633-25-2 |
| Molecular Formula | C ₇ H ₆ BrClO |
| Molecular Weight | 221.48 |
| Appearance | Pale yellow to brown color liquid |
| ¹H NMR | Conforms to structure |
| Purity by GC | ≥ 98% |
| Storage | Store at 0-8°C |

For Laboratory Use Only