

Chem-Impex International, Inc.

Tel: (630) 766-2112

E-mail: sales@chemimpex.com

Shipping and Correspondence:

935 Dillon Drive

Wood Dale, IL 60191

Fax: (630) 766-2218

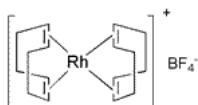
Web site: www.chemimpex.com

Manufacturing site:

825 Dillon Drive

Wood Dale, IL 60191

Product Specifications



Catalogue Number	27830
Product	Bis(1,5-cyclooctadiene)rhodium(I)
CAS Number	35138-22-8
Molecular Formula	Rh(C ₈ H ₁₂) ₂ BF ₄
Molecular Weight	406.08

Appearance	Dark red or red-brown orange solid
Elemental Analysis (Theory)	C = 46.3 - 47.7%, H = 5.4 - 6.4%
Infrared Spectrum	Conforms to structure
Assay	24.3 - 26.3% (Rhodium content)
Purity	≥ 98.5% (Based on carbon)
Storage	Store 0-8 °C under Nitrogen

For Laboratory Use Only