

Chem-Impex International, Inc.

Tel: (630) 766-2112

E-mail: sales@chemimpex.com

Shipping and Correspondence:

935 Dillon Drive

Wood Dale, IL 60191

Fax: (630) 766-2218

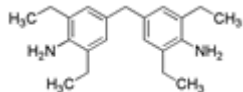
Web site: www.chemimpex.com

Manufacturing site:

825 Dillon Drive

Wood Dale, IL 60191

Product Specifications



Catalogue Number 27823

Product **4,4'-Methylenebis(2,6-diethylaniline)**

4,4'-Diamino-3,3',5,5'-tetraethyldiphenylmethane

CAS Number 13680-35-8

Molecular Formula C₂₁H₃₀N₂

Molecular Weight 310.48

Appearance Off-white pellets

Melting Point 85-93° C

Purity by GC ≥99%

Storage Store at 0-8°C

For Laboratory Use Only