

Chem-Impex International, Inc.

Tel: (630) 766-2112

E-mail: sales@chemimpex.com

Shipping and Correspondence:

935 Dillon Drive

Wood Dale, IL 60191

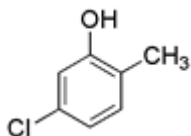
Fax: (630) 766-2218

Web site: www.chemimpex.com

Manufacturing site:

825 Dillon Drive

Wood Dale, IL 60191



Product Specifications

Catalogue Number 27750
Product **5-Chloro-2-methylphenol**

4-Chloro-2-hydroxytoluene

5-Chloro-2-cresol

CAS Number 5306-98-9

Molecular Formula C₇H₇ClO

Molecular Weight 142.58

Appearance Light brown powder

Melting Point 72 - 76 °C

Purity by GC ≥ 98%

Storage Store at RT

For Laboratory Use Only