

Chem-Impex International, Inc.

Tel: (630) 766-2112

E-mail: sales@chemimpex.com

Shipping and Correspondence:

935 Dillon Drive

Wood Dale, IL 60191

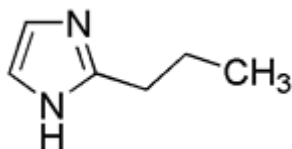
Fax: (630) 766-2218

Web site: www.chemimpex.com

Manufacturing site:

825 Dillon Drive

Wood Dale, IL 60191



Product Specifications

Catalogue Number	27740
Product	2-<i>n</i>-Propylimidazole
	2-Propyl-1 <i>H</i> -imidazole
CAS Number	50995-95-4
Molecular Formula	C ₆ H ₁₀ N ₂
Molecular Weight	110.16

Appearance	White or light yellow crystalline
Melting Point	53-61 °C
Water Content (Karl Fisher)	≤ 0.5%
Assay	≥ 99%
Storage	Store at 0-8°C

For Laboratory Use Only