

Chem-Impex International, Inc.

Tel: (630) 766-2112

E-mail: sales@chemimpex.com

Shipping and Correspondence:

935 Dillon Drive

Wood Dale, IL 60191

Fax: (630) 766-2218

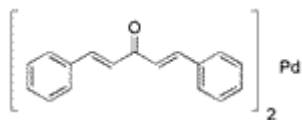
Web site: www.chemimpex.com

Manufacturing site:

825 Dillon Drive

Wood Dale, IL 60191

Product Specifications



Catalogue Number	27699
Product	Bis(dibenzylideneacetone)palladium(0) Palladium(0) bis(dibenzylideneacetone)
CAS Number	32005-36-0
Molecular Formula	C ₃₄ H ₂₈ O ₂ Pd
Molecular Weight	575.01

Appearance	Dark purple to brown solid
Elemental Analysis (Theory)	C : 71.02 ± 2.1%, H : 4.91 ± 0.6%
Infrared Spectrum	Conforms to structure
Assay	≥ 97% (≥ 18.5% Pd Content)
Purity	≥ 97% (Based on carbon %)
Storage	Store at 0 - 8 °C

For Laboratory Use Only