

Chem-Impex International, Inc.

Tel: (630) 766-2112

E-mail: sales@chemimpex.com

Shipping and Correspondence:

935 Dillon Drive

Wood Dale, IL 60191

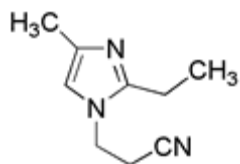
Fax: (630) 766-2218

Web site: www.chemimpex.com

Manufacturing site:

825 Dillon Drive

Wood Dale, IL 60191



Product Specifications

Catalogue Number	27687
Product	2-Ethyl-4-methyl-1H-imidazole-1-propanenitrile 1-(2-Cyanoethyl)-2-ethyl-4-methylimidazole
CAS Number	23996-25-0
Molecular Formula	C ₉ H ₁₃ N ₃
Molecular Weight	163.22
<hr/>	
Appearance	Light yellow crystal
Water Content (Karl Fisher)	≤ 0.5%
Purity by GC	≥ 95%
Storage	Store at 0-8°C

For Laboratory Use Only