

# Chem-Impex International, Inc.

---

**Tel:** (630) 766-2112

**E-mail:** sales@chemimpex.com

**Shipping and Correspondence:**

935 Dillon Drive

Wood Dale, IL 60191

**Fax:** (630) 766-2218

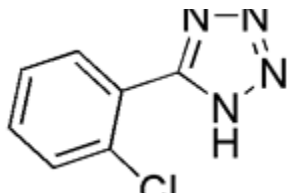
**Web site:** www.chemimpex.com

**Manufacturing site:**

825 Dillon Drive

Wood Dale, IL 60191

---



## Product Specifications

<b>Catalogue Number</b>	27594
<b>Product</b>	<b>5-(2-Chlorophenyl)-1H-tetrazole</b>
<b>CAS Number</b>	50907-46-5
<b>Molecular Formula</b>	C <sub>7</sub> H <sub>5</sub> ClN <sub>4</sub>
<b>Molecular Weight</b>	180.6

---

<b>Appearance</b>	Off-white to white crystalline powder
<b>Melting Point</b>	178-184°C
<b>Water Content (Karl Fisher)</b>	≤ 0.5%
<b>Purity by HPLC</b>	≥ 98%
<b>Storage</b>	Store at 0-8°C

**For Laboratory Use Only**