

Chem-Impex International, Inc.

Tel: (630) 766-2112

E-mail: sales@chemimpex.com

Shipping and Correspondence:

935 Dillon Drive

Wood Dale, IL 60191

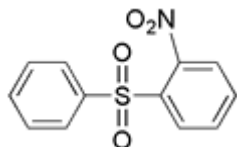
Fax: (630) 766-2218

Web site: www.chemimpex.com

Manufacturing site:

825 Dillon Drive

Wood Dale, IL 60191



Product Specifications

Catalogue Number	27523
Product	2-Nitrophenyl phenyl sulfone
	2-Nitrodiphenyl sulfone
CAS Number	31515-43-2
Molecular Formula	C ₁₂ H ₉ NO ₄ S
Molecular Weight	263.27
<hr/>	
Appearance	White to off-white crystalline powder
Melting Point	145-150 °C
Purity by GC	≥ 99%
Storage	Store at 0-8 °C

For Laboratory Use Only