

Chem-Impex International, Inc.

Tel: (630) 766-2112

E-mail: sales@chemimpex.com

Shipping and Correspondence:

935 Dillon Drive

Wood Dale, IL 60191

Fax: (630) 766-2218

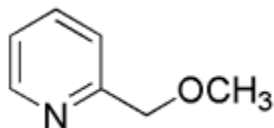
Web site: www.chemimpex.com

Manufacturing site:

825 Dillon Drive

Wood Dale, IL 60191

Product Specifications



Catalogue Number	27516
Product	2-(Methoxymethyl)pyridine
	Methyl 2-pyridylmethyl ether
CAS Number	23579-92-2
Molecular Formula	C ₇ H ₉ NO
Molecular Weight	123.15

Appearance	Colorless to pale yellow liquid
¹H NMR	Conforms to structure
Purity by GC	≥ 99%
Storage	Store at 0-8°C

For Laboratory Use Only