

# Chem-Impex International, Inc.

---

**Tel:** (630) 766-2112

**E-mail:** sales@chemimpex.com

**Shipping and Correspondence:**

935 Dillon Drive

Wood Dale, IL 60191

**Fax:** (630) 766-2218

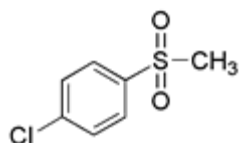
**Web site:** www.chemimpex.com

**Manufacturing site:**

825 Dillon Drive

Wood Dale, IL 60191

---



## Product Specifications

|                          |  |
|--------------------------|--|
| <b>Catalogue Number</b>  | 27503  |
| <b>Product</b>           | <b>4-Chlorophenyl methyl sulfone</b>             |
| <b>CAS Number</b>        | 98-57-7  |
| <b>Molecular Formula</b> | C <sub>7</sub> H <sub>7</sub> ClO <sub>2</sub> S |
| <b>Molecular Weight</b>  | 190.65   |

---

|                                    |  |
|------------------------------------|--|
| <b>Appearance</b>                  | White to light yellow crystalline powder |
| <b>Melting Point</b>               | 90-98 °C                                 |
| <b>Water Content (Karl Fisher)</b> | ≤ 0.5%                                   |
| <b><sup>1</sup>H NMR</b>           | Conforms to structure                    |
| <b>Purity by GC</b>                | ≥ 99%                                    |
| <b>Storage</b>                     | Store at 0-8 °C                          |

**For Laboratory Use Only**