

Chem-Impex International, Inc.

Tel: (630) 766-2112

E-mail: sales@chemimpex.com

Shipping and Correspondence:

935 Dillon Drive

Wood Dale, IL 60191

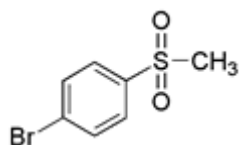
Fax: (630) 766-2218

Web site: www.chemimpex.com

Manufacturing site:

825 Dillon Drive

Wood Dale, IL 60191



Product Specifications

Catalogue Number	27501
Product	4-Bromophenyl methyl sulfone
CAS Number	3466-32-8
Molecular Formula	C ₇ H ₇ BrO ₂ S
Molecular Weight	235.1

Appearance	White crystal
Purity by GC	≥ 99%
Storage	Store at 0-8 °C

For Laboratory Use Only