

Chem-Impex International, Inc.

Tel: (630) 766-2112

E-mail: sales@chemimpex.com

Shipping and Correspondence:

935 Dillon Drive

Wood Dale, IL 60191

Fax: (630) 766-2218

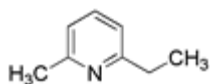
Web site: www.chemimpex.com

Manufacturing site:

825 Dillon Drive

Wood Dale, IL 60191

Product Specifications



Catalogue Number	27484
Product	2-Ethyl-6-methylpyridine
	2-Ethyl-6-picoline
	6-Ethyl-2-picoline
CAS Number	1122-69-6
Molecular Formula	C ₈ H ₁₁ N
Molecular Weight	121.18
<hr/>	
Appearance	Colorless to light yellow liquid
Loss on Drying	≤ 0.5%
¹H NMR	Conforms to structure
Purity by GC	≥ 97%
Storage	Store at 0-8 °C

For Laboratory Use Only