

Chem-Impex International, Inc.

Tel: (630) 766-2112

E-mail: sales@chemimpex.com

Shipping and Correspondence:

935 Dillon Drive

Wood Dale, IL 60191

Fax: (630) 766-2218

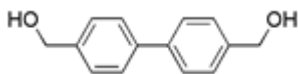
Web site: www.chemimpex.com

Manufacturing site:

825 Dillon Drive

Wood Dale, IL 60191

Product Specifications



Catalogue Number 27413
Product **4,4'-Bisbenzyl alcohol**

4,4'-Biphenyldimethanol

CAS Number 1667-12-5

Molecular Formula C₁₄H₁₄O₂

Molecular Weight 214.26

Appearance White powder

Melting Point 189-197 °C

Loss on Drying ≤ 0.5%

Assay ≥ 99%

Storage Store at 0-8°C

For Laboratory Use Only