

# Chem-Impex International, Inc.

---

Tel: (630) 766-2112

E-mail: sales@chemimpex.com

Shipping and Correspondence:

935 Dillon Drive

Wood Dale, IL 60191

Fax: (630) 766-2218

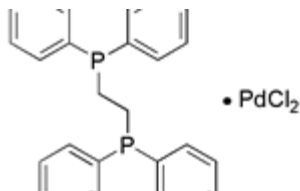
Web site: www.chemimpex.com

Manufacturing site:

825 Dillon Drive

Wood Dale, IL 60191

---



## Product Specifications

Catalogue Number	27393
Product	<b>[1,2-Bis(diphenylphosphino)ethane] dichloropalladium(II)</b> PdCl <sub>2</sub> (dppe)
CAS Number	19978-61-1
Molecular Formula	[(C <sub>6</sub> H <sub>5</sub> ) <sub>2</sub> PCH <sub>2</sub> CH <sub>2</sub> P(C <sub>6</sub> H <sub>5</sub> ) <sub>2</sub> ]PdCl <sub>2</sub>
Molecular Weight	575.75
Appearance	Off-white powder
Elemental Analysis (Theory)	C= 54.23 ± 0.5, H= 4.20 ± 0.5
Solvent	≤ 0.5%
Assay	Pd : ≥ 18%
Purity	≥ 98%
Storage	Store at RT

---

**For Laboratory Use Only**