

# Chem-Impex International, Inc.

---

**Tel:** (630) 766-2112

**E-mail:** sales@chemimpex.com

**Shipping and Correspondence:**

935 Dillon Drive

Wood Dale, IL 60191

**Fax:** (630) 766-2218

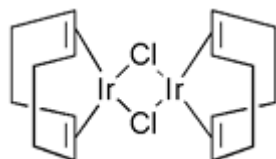
**Web site:** www.chemimpex.com

**Manufacturing site:**

825 Dillon Drive

Wood Dale, IL 60191

---



## Product Specifications

<b>Catalogue Number</b>	27322
<b>Product</b>	<b>Bis(1,5-cyclooctadiene)diiridium(I) dichloride</b> 1,5-Cyclooctadiene-iridium(I) chloride dimer [Ir(1,5-cod)Cl] <sub>2</sub>
<b>CAS Number</b>	12112-67-3
<b>Molecular Formula</b>	C <sub>16</sub> H <sub>24</sub> Cl <sub>2</sub> Ir <sub>2</sub>
<b>Molecular Weight</b>	671.71

---

<b>Appearance</b>	Orange to red crystalline solid
<b>Elemental Analysis (Theory)</b>	C = 28.61 ± 0.3%, H = 3.60 ± 0.036%
<b>Infrared Spectrum</b>	Conforms to structure
<b>Assay</b>	≥ 99% (≥ 57% Ir Content)
<b>Storage</b>	Store at 0 - 8 °C

**For Laboratory Use Only**