

Chem-Impex International, Inc.

Tel: (630) 766-2112

E-mail: sales@chemimpex.com

Shipping and Correspondence:

935 Dillon Drive

Wood Dale, IL 60191

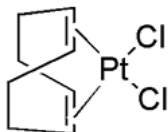
Fax: (630) 766-2218

Web site: www.chemimpex.com

Manufacturing site:

825 Dillon Drive

Wood Dale, IL 60191



Product Specifications

Catalogue Number	27321
Product	Dichloro(1,5-cyclooctadiene)platinum(II) Pt(Cod)Cl ₂
CAS Number	12080-32-9
Molecular Formula	C ₈ H ₁₂ Cl ₂ Pt
Molecular Weight	374.17

Warnings	<i>Hygroscopic!</i>
Appearance	White to light yellow powder
Melting Point	285 °C
Assay	Pt : ≥ 52%
Purity	≥ 99%
Application	Catalyst for hydrogenative cyclization of allenynes
Storage	Store at RT

For Laboratory Use Only