

Chem-Impex International, Inc.

Tel: (630) 766-2112

E-mail: sales@chemimpex.com

Shipping and Correspondence:

935 Dillon Drive

Wood Dale, IL 60191

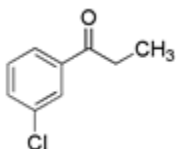
Fax: (630) 766-2218

Web site: www.chemimpex.com

Manufacturing site:

825 Dillon Drive

Wood Dale, IL 60191



Product Specifications

Catalogue Number	27232
Product	3'-Chloropropiophenone <i>m</i> -Chloropropiophenone
CAS Number	34841-35-5
Molecular Formula	C ₉ H ₉ ClO
Molecular Weight	168.62

Appearance	White crystalline powder
Water Content (Karl Fisher)	≤ 0.5%
Purity by GC	≥ 99%
Storage	Store at 0-8°C

For Laboratory Use Only