

# *Chem-Impex International, Inc.*

---

**Tel:** (630) 766-2112

**E-mail:** sales@chemimpex.com

**Shipping and Correspondence:**

935 Dillon Drive

Wood Dale, IL 60191

**Fax:** (630) 766-2218

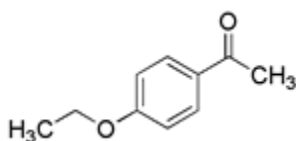
**Web site:** www.chemimpex.com

**Manufacturing site:**

825 Dillon Drive

Wood Dale, IL 60191

---



## *Product Specifications*

<b>Catalogue Number</b>	27206
<b>Product</b>	<b>4'-Ethoxyacetophenone</b>
	4-Acetylphenetole
<b>CAS Number</b>	1676-63-7
<b>Molecular Formula</b>	C <sub>10</sub> H <sub>12</sub> O <sub>2</sub>
<b>Molecular Weight</b>	164.2

---

<b>Appearance</b>	White crystalline powder
<b>Solubility</b>	Clear soluble in Methanol and Acetone
<b>Melting Point</b>	33-40 °C
<b>Purity</b>	≥ 99%
<b>Storage</b>	Store at 0-8 °C

**For Laboratory Use Only**