

Chem-Impex International, Inc.

Tel: (630) 766-2112

E-mail: sales@chemimpex.com

Shipping and Correspondence:

935 Dillon Drive

Wood Dale, IL 60191

Fax: (630) 766-2218

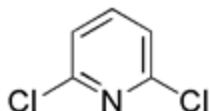
Web site: www.chemimpex.com

Manufacturing site:

825 Dillon Drive

Wood Dale, IL 60191

Product Specifications



Catalogue Number	27010
Product	2,6-Dichloropyridine
	6-Chloropicoline
CAS Number	2402-78-0
Molecular Formula	C ₅ H ₃ Cl ₂ N
Molecular Weight	147.99

Appearance	White to off-white crystalline powder with chunks.
Melting Point	82-88 °C
Water Content (Karl Fisher)	≤ 0.5%
Purity by GC	≥ 98%
Storage	Store at 0-8 °C

For Laboratory Use Only