

Chem-Impex International, Inc.

Tel: (630) 766-2112

E-mail: sales@chemimpex.com

Shipping and Correspondence:

935 Dillon Drive

Wood Dale, IL 60191

Fax: (630) 766-2218

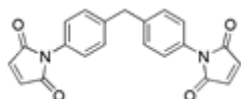
Web site: www.chemimpex.com

Manufacturing site:

825 Dillon Drive

Wood Dale, IL 60191

Product Specifications



Catalogue Number	26951
Product	4,4'-Methylenebis(N-phenylmaleimide) 1,1'-(Methylenedi-4,1-phenylene)bismaleimide <i>N, N'</i> -(4,4'-Methylenediphenyl)dimaleimide
CAS Number	13676-54-5
Molecular Formula	C ₂₁ H ₁₄ N ₂ O ₄
Molecular Weight	358.35

Appearance	Light yellow crystalline powder
Melting Point	155-161 °C
Acid value	≤ 1.0 mg KOH/g
Loss on Drying	≤ 0.5%
Ash	≤ 0.5%
Assay	≥ 99%
Storage	Store at 0-8 °C

For Laboratory Use Only