

Chem-Impex International, Inc.

Tel: (630) 766-2112

E-mail: sales@chemimpex.com

Shipping and Correspondence:

935 Dillon Drive

Wood Dale, IL 60191

Fax: (630) 766-2218

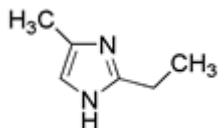
Web site: www.chemimpex.com

Manufacturing site:

825 Dillon Drive

Wood Dale, IL 60191

Product Specifications



Catalogue Number	26930
Product	2-Ethyl-4-methylimidazole
CAS Number	931-36-2
Molecular Formula	C ₆ H ₁₀ N ₂
Molecular Weight	110.16

Appearance	Yellowish viscous liquid to solid
Viscosity	3000-6000 cps @ (25° C)
Water Content (Karl Fisher)	≤ 0.5%
Related Substances	4-Methylimidazole: ≤ 2% 2,4-Methylimidazole: ≤ 3%
Purity by GC	≥ 96%
Storage	Store at 0-8 °C

For Laboratory Use Only