

# Chem-Impex International, Inc.

---

**Tel:** (630) 766-2112

**E-mail:** sales@chemimpex.com

**Shipping and Correspondence:**

935 Dillon Drive

Wood Dale, IL 60191

**Fax:** (630) 766-2218

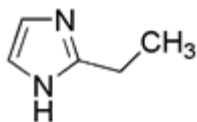
**Web site:** www.chemimpex.com

**Manufacturing site:**

825 Dillon Drive

Wood Dale, IL 60191

---



## Product Specifications

**Catalogue Number** 26929  
**Product** **2-Ethylimidazole**

2-Ethylglyoxaline

**CAS Number** 1072-62-4

**Molecular Formula** C<sub>5</sub>H<sub>8</sub>N<sub>2</sub>

**Molecular Weight** 96.13

---

**Appearance** White or light yellow grain

**Melting Point** 75-82 °C

**Water Content (Karl Fisher)** ≤ 0.5%

**Purity by GC** ≥ 99%

**Storage** Store at 0-8°C

**For Laboratory Use Only**