

Chem-Impex International, Inc.

Tel: (630) 766-2112

E-mail: sales@chemimpex.com

Shipping and Correspondence:

935 Dillon Drive

Wood Dale, IL 60191

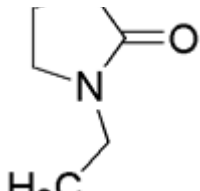
Fax: (630) 766-2218

Web site: www.chemimpex.com

Manufacturing site:

825 Dillon Drive

Wood Dale, IL 60191



Product Specifications

Catalogue Number	26864
Product	N-Ethyl-2-pyrrolidinone
	1-Ethyl-2-pyrrolidone
	1-Ethylpyrrolidin-2-one
CAS Number	2687-91-4
Molecular Formula	C ₆ H ₁₁ NO
Molecular Weight	113.16
<hr/>	
Appearance	Clear liquid
Density	0.990-0.999
Refractive Index	1.465-1.467
Water Content (Karl Fisher)	≤ 0.10%
pH	7-10
Related Substances	Total Amines: ≤ 0.01% γ-Butyrolactone: ≤ 0.3%
Purity by GC	≥ 99.5%
Storage	Store at 0-8 °C
Additional Information	Color (Hazen): ≤ 25

For Laboratory Use Only