

Chem-Impex International, Inc.

Tel: (630) 766-2112

E-mail: sales@chemimpex.com

Shipping and Correspondence:

935 Dillon Drive

Wood Dale, IL 60191

Fax: (630) 766-2218

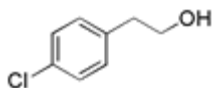
Web site: www.chemimpex.com

Manufacturing site:

825 Dillon Drive

Wood Dale, IL 60191

Product Specifications



Catalogue Number	26850
Product	4-Chlorophenethyl alcohol
	2-(4-Chlorophenyl)ethanol
	4-Chlorophenethylalcohol
CAS Number	1875-88-3
Molecular Formula	C ₈ H ₉ ClO
Molecular Weight	156.61
<hr/>	
Appearance	Colorless transparent liquid
Water Content (Karl Fisher)	≤ 0.5%
Related Substances	Individual impurities: ≤ 0.3%
¹H NMR	Conforms to structure
Purity by GC	≥ 99%
Storage	Store at 0-8 °C

For Laboratory Use Only