

# Chem-Impex International, Inc.

---

**Tel:** (630) 766-2112

**E-mail:** sales@chemimpex.com

**Shipping and Correspondence:**

935 Dillon Drive

Wood Dale, IL 60191

**Fax:** (630) 766-2218

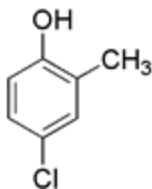
**Web site:** www.chemimpex.com

**Manufacturing site:**

825 Dillon Drive

Wood Dale, IL 60191

---



## Product Specifications

**Catalogue Number** 26818  
**Product** **4-Chloro-2-methylphenol**

4-Chloro-*o*-cresol

2-Methyl-4-chlorophenol

**CAS Number** 1570-64-5

**Molecular Formula** C<sub>7</sub>H<sub>7</sub>ClO

**Molecular Weight** 142.58

---

**Appearance** White to off-white solid

**Water Content (Karl Fisher)** ≤ 0.5%

**Related Substances**  
o-Cresol: ≤ 0.5%  
2,4-Dichloro-*o*-cresol: ≤ 0.5%  
4-Chloro-6-methyl-*o*-cresol: ≤ 0.5%

**<sup>1</sup>H NMR** Conforms to structure

**Purity by GC** ≥ 99%

**Storage** Store at RT

**For Laboratory Use Only**