

Chem-Impex International, Inc.

Tel: (630) 766-2112

E-mail: sales@chemimpex.com

Shipping and Correspondence:

935 Dillon Drive

Wood Dale, IL 60191

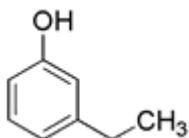
Fax: (630) 766-2218

Web site: www.chemimpex.com

Manufacturing site:

825 Dillon Drive

Wood Dale, IL 60191



Product Specifications

Catalogue Number 26816
Product **3-Ethylphenol**

m-Ethylphenol

CAS Number 620-17-7

Molecular Formula C₈H₁₀O

Molecular Weight 122.17

Appearance Light yellow clear liquid

Water Content (Karl Fisher) ≤ 0.5%

Related Substances
Phenol: ≤ 2%
m-Cresol: ≤ 0.5%
4-Ethylphenol: ≥ 2%

Purity by GC ≥ 96%

Storage Store at RT

For Laboratory Use Only