

Chem-Impex International, Inc.

Tel: (630) 766-2112

E-mail: sales@chemimpex.com

Shipping and Correspondence:

935 Dillon Drive

Wood Dale, IL 60191

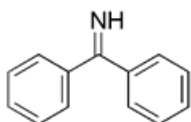
Fax: (630) 766-2218

Web site: www.chemimpex.com

Manufacturing site:

825 Dillon Drive

Wood Dale, IL 60191



Product Specifications

Catalogue Number	26787
Product	Benzophenone imine 1,1-Diphenylmethanimine
CAS Number	1013-88-3
Molecular Formula	C ₁₃ H ₁₁ N
Molecular Weight	181.24

Appearance	Colorless to pale yellow liquid
Purity by GC	≥ 99%
Storage	Store at 2 - 8 °C, <i>Protect from Light!</i>

For Laboratory Use Only