

Chem-Impex International, Inc.

Tel: (630) 766-2112

E-mail: sales@chemimpex.com

Shipping and Correspondence:

935 Dillon Drive

Wood Dale, IL 60191

Fax: (630) 766-2218

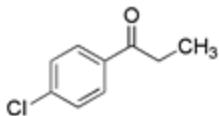
Web site: www.chemimpex.com

Manufacturing site:

825 Dillon Drive

Wood Dale, IL 60191

Product Specifications



Catalogue Number	26760
Product	4'-Chloropropiophenone
	4-Chlorophenyl ethyl ketone
CAS Number	6285-05-8
Molecular Formula	C ₉ H ₉ ClO
Molecular Weight	168.62

Appearance	Off-white to yellow crystalline solid
Water Content (Karl Fisher)	≤ 0.5%
Purity by GC	≥ 99%
Storage	Store at 0-8 °C

For Laboratory Use Only