

Chem-Impex International, Inc.

Tel: (630) 766-2112

E-mail: sales@chemimpex.com

Shipping and Correspondence:

935 Dillon Drive

Wood Dale, IL 60191

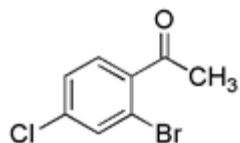
Fax: (630) 766-2218

Web site: www.chemimpex.com

Manufacturing site:

825 Dillon Drive

Wood Dale, IL 60191



Product Specifications

Catalogue Number 26759
Product **4-Chlorophenacyl bromide**

α -Bromo-4-chloroacetophenone

2-Bromo-4'-chloroacetophenone

CAS Number 536-38-9
Molecular Formula C₈H₆BrClO

Molecular Weight 233.49

Appearance Off-white to yellow solid
Melting Point 94-101 °C
Related Substances 2-chloro-4'-chloroacetophenone: 0.5% Max
¹H NMR Conforms to structure
Assay ≥ 97%
Storage Store at 0-8 °C

For Laboratory Use Only