

# Chem-Impex International, Inc.

---

**Tel:** (630) 766-2112

**E-mail:** sales@chemimpex.com

**Shipping and Correspondence:**

935 Dillon Drive

Wood Dale, IL 60191

**Fax:** (630) 766-2218

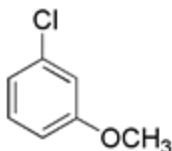
**Web site:** www.chemimpex.com

**Manufacturing site:**

825 Dillon Drive

Wood Dale, IL 60191

---



## Product Specifications

|                                    |  |
|------------------------------------|--|
| <b>Catalogue Number</b>            | 26754  |
| <b>Product</b>                     | <b>3-Chloroanisole</b><br><br><i>m</i> -Chloroanisole<br><br><i>m</i> -Chlorophenyl methyl ether |
| <b>CAS Number</b>                  | 2845-89-8  |
| <b>Molecular Formula</b>           | C <sub>7</sub> H <sub>7</sub> ClO  |
| <b>Molecular Weight</b>            | 142.58   |
| <b>Appearance</b>                  | Colorless to pale yellow liquid  |
| <b>Water Content (Karl Fisher)</b> | ≤ 0.2%   |
| <b>Related Substances</b>          | Other impurity: ≤ 1.0%   |
| <b>Purity by GC</b>                | ≥ 99%  |
| <b>Storage</b>                     | Store at 0-8 °C  |

---

**For Laboratory Use Only**