

Chem-Impex International, Inc.

Tel: (630) 766-2112

E-mail: sales@chemimpex.com

Shipping and Correspondence:

935 Dillon Drive

Wood Dale, IL 60191

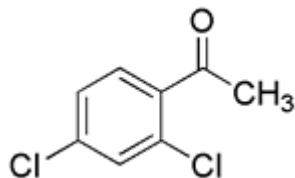
Fax: (630) 766-2218

Web site: www.chemimpex.com

Manufacturing site:

825 Dillon Drive

Wood Dale, IL 60191



Product Specifications

Catalogue Number 26753
Product **2',4'-Dichloroacetophenone**

1-Acetyl-2,4-dichlorobenzene

CAS Number 2234-16-4

Molecular Formula C₈H₆Cl₂O

Molecular Weight 189.04

Appearance Off-white solid or off-colorless liquid

Melting Point 32-34 °C

Water Content (Karl Fisher) ≤ 0.3%

Purity by GC ≥ 99%

Application Used as intermediate for pesticides or pharmaceuticals.

Storage Store at 0-8 °C

For Laboratory Use Only