

Chem-Impex International, Inc.

Tel: (630) 766-2112

E-mail: sales@chemimpex.com

Shipping and Correspondence:

935 Dillon Drive

Wood Dale, IL 60191

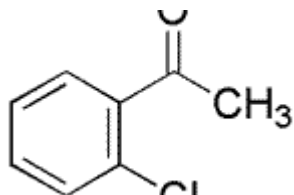
Fax: (630) 766-2218

Web site: www.chemimpex.com

Manufacturing site:

825 Dillon Drive

Wood Dale, IL 60191



Product Specifications

Catalogue Number	26752
Product	2'-Chloroacetophenone 1-Acetyl-2-chlorobenzene <i>o</i> -Chloroacetophenone
CAS Number	2142-68-9
Molecular Formula	C ₈ H ₇ ClO
Molecular Weight	154.6

Appearance	Colorless to pale yellow liquid
Water Content (Karl Fisher)	≤ 0.2%
Purity by GC	≥ 99%
Storage	Store at 0-8 °C

For Laboratory Use Only