

Chem-Impex International, Inc.

Tel: (630) 766-2112

E-mail: sales@chemimpex.com

Shipping and Correspondence:

935 Dillon Drive

Wood Dale, IL 60191

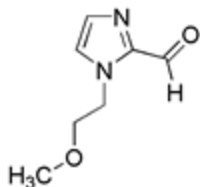
Fax: (630) 766-2218

Web site: www.chemimpex.com

Manufacturing site:

825 Dillon Drive

Wood Dale, IL 60191



Product Specifications

Catalogue Number	26687
Product	1-(2-Methoxyethyl)-1H-imidazole-2-carbaldehyde
CAS Number	558446-64-3
Molecular Formula	C ₇ H ₁₀ N ₂ O ₂
Molecular Weight	154.2

Appearance	White crystalline solid
¹H NMR	Conforms to structure
Purity	≥ 95% (NMR)
Storage	Store at 0-8°C

For Laboratory Use Only