

Chem-Impex International, Inc.

Tel: (630) 766-2112

E-mail: sales@chemimpex.com

Shipping and Correspondence:

935 Dillon Drive

Wood Dale, IL 60191

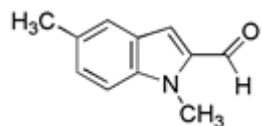
Fax: (630) 766-2218

Web site: www.chemimpex.com

Manufacturing site:

825 Dillon Drive

Wood Dale, IL 60191



Product Specifications

Catalogue Number	26580
Product	1,5-Dimethyl-1H-indole-2-carbaldehyde
CAS Number	883526-76-9
Molecular Formula	C ₁₁ H ₁₁ NO
Molecular Weight	173.2
<hr/>	
Appearance	Beige powder
Analysis by Mass Spectra	Conforms to structure
¹H NMR	Conforms to structure
Purity	≥ 97% (NMR)
Storage	Store at 0-8°C

For Laboratory Use Only