

Chem-Impex International, Inc.

Tel: (630) 766-2112

E-mail: sales@chemimpex.com

Shipping and Correspondence:

935 Dillon Drive

Wood Dale, IL 60191

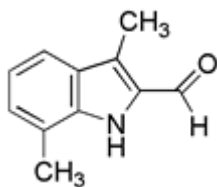
Fax: (630) 766-2218

Web site: www.chemimpex.com

Manufacturing site:

825 Dillon Drive

Wood Dale, IL 60191



Product Specifications

Catalogue Number	26577
Product	3,7-Dimethyl-1H-indole-2-carbaldehyde
CAS Number	1463-72-5
Molecular Formula	C ₁₁ H ₁₁ NO
Molecular Weight	173.2
<hr/>	
Appearance	Yellow solid
¹H NMR	Conforms to structure
Purity by HPLC	≥ 99%
Storage	Store at 0-8 °C

For Laboratory Use Only