

Chem-Impex International, Inc.

Tel: (630) 766-2112

E-mail: sales@chemimpex.com

Shipping and Correspondence:

935 Dillon Drive

Wood Dale, IL 60191

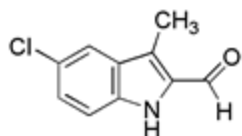
Fax: (630) 766-2218

Web site: www.chemimpex.com

Manufacturing site:

825 Dillon Drive

Wood Dale, IL 60191



Product Specifications

Catalogue Number	26576
Product	5-Chloro-3-methyl-1H-indole-2-carbaldehyde
CAS Number	40731-16-6
Molecular Formula	C ₁₀ H ₈ ClNO
Molecular Weight	193.6

Appearance	Brown to yellow powder
¹H NMR	Conforms to structure
Purity	≥ 95% (NMR)
Storage	Store at 0-8°C

For Laboratory Use Only