

Chem-Impex International, Inc.

Tel: (630) 766-2112

E-mail: sales@chemimpex.com

Shipping and Correspondence:

935 Dillon Drive

Wood Dale, IL 60191

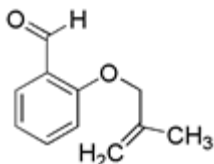
Fax: (630) 766-2218

Web site: www.chemimpex.com

Manufacturing site:

825 Dillon Drive

Wood Dale, IL 60191



Product Specifications

Catalogue Number	26561
Product	2-[(2-Methyl-2-propen-1-yl)oxy]benzaldehyde 2-(2-Methyl-allyloxy)benzaldehyde
CAS Number	38002-87-8
Molecular Formula	C ₁₁ H ₁₂ O ₂
Molecular Weight	176.2
Appearance	Colorless clear liquid
¹H NMR	Conforms to structure
Purity by HPLC	≥ 99% (HPLC)
Storage	Store at 0-8 °C

For Laboratory Use Only