

Chem-Impex International, Inc.

Tel: (630) 766-2112

E-mail: sales@chemimpex.com

Shipping and Correspondence:

935 Dillon Drive

Wood Dale, IL 60191

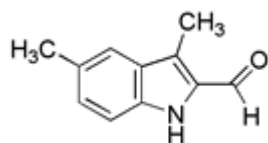
Fax: (630) 766-2218

Web site: www.chemimpex.com

Manufacturing site:

825 Dillon Drive

Wood Dale, IL 60191



Product Specifications

Catalogue Number	26560
Product	3,5-Dimethyl-1H-indole-2-carbaldehyde
CAS Number	1463-67-8
Molecular Formula	C ₁₁ H ₁₁ NO
Molecular Weight	173.2

Appearance	Sand colored or Light yellow solid
¹H NMR	Conforms to structure
Assay	≥ 95%
Storage	Store at 0-8 °C

For Laboratory Use Only