

Chem-Impex International, Inc.

Tel: (630) 766-2112

E-mail: sales@chemimpex.com

Shipping and Correspondence:

935 Dillon Drive

Wood Dale, IL 60191

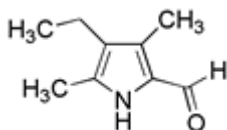
Fax: (630) 766-2218

Web site: www.chemimpex.com

Manufacturing site:

825 Dillon Drive

Wood Dale, IL 60191



Product Specifications

Catalogue Number	26551
Product	4-Ethyl-3,5-dimethyl-1H-pyrrole-2-
CAS Number	6250-80-2
Molecular Formula	C ₉ H ₁₃ NO
Molecular Weight	151.2

Appearance	Beige crystalline powder
¹H NMR	Conforms to structure
LCMS	Conforms to structure
Purity	≥ 95% (LCMS)
Storage	Store at 0 - 8 °C

For Laboratory Use Only