

Chem-Impex International, Inc.

Tel: (630) 766-2112

E-mail: sales@chemimpex.com

Shipping and Correspondence:

935 Dillon Drive

Wood Dale, IL 60191

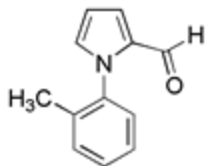
Fax: (630) 766-2218

Web site: www.chemimpex.com

Manufacturing site:

825 Dillon Drive

Wood Dale, IL 60191



Product Specifications

Catalogue Number	26539
Product	1-(2-Methylphenyl)-1H-pyrrole-2-carbaldehyde
CAS Number	35524-41-5
Molecular Formula	C ₁₂ H ₁₁ NO
Molecular Weight	185.2
<hr/>	
Appearance	Dark liquid
¹H NMR	Conforms to structure
Purity	≥ 95% (NMR)
Storage	Store at 0-8 °C

For Laboratory Use Only