

Chem-Impex International, Inc.

Tel: (630) 766-2112

E-mail: sales@chemimpex.com

Shipping and Correspondence:

935 Dillon Drive

Wood Dale, IL 60191

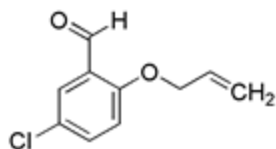
Fax: (630) 766-2218

Web site: www.chemimpex.com

Manufacturing site:

825 Dillon Drive

Wood Dale, IL 60191



Product Specifications

Catalogue Number	26533
Product	2-(Allyloxy)-5-chlorobenzaldehyde
CAS Number	152842-93-8
Molecular Formula	C ₁₀ H ₉ ClO ₂
Molecular Weight	196.6

Appearance	Off-white crystalline solid
¹H NMR	Conforms to structure
Purity	≥ 95% (NMR)
Storage	Store at 0-8°C

For Laboratory Use Only