

Chem-Impex International, Inc.

Tel: (630) 766-2112

E-mail: sales@chemimpex.com

Shipping and Correspondence:

935 Dillon Drive

Wood Dale, IL 60191

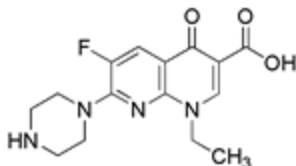
Fax: (630) 766-2218

Web site: www.chemimpex.com

Manufacturing site:

825 Dillon Drive

Wood Dale, IL 60191



Product Specifications

Catalogue Number	26513
Product	Enoxacin Enofloxacin
CAS Number	74011-58-8
Molecular Formula	C ₁₅ H ₁₇ FN ₄ O ₃
Molecular Weight	320.32

Appearance	White to pale yellow crystalline powder
Melting Point	222-229 °C (After drying)
Heavy Metals	≤ 20 ppm
Anion	Sulfate (SO ₄ ²⁻): ≤ 0.048%
Cation	Arsenic (As): ≤ 2 ppm
Loss on Drying	7.8-9.0% (1g, 105 °C, 3h)
Related Substances	≤ 0.5% (The spots other than the principal spot from the sample solution are not more than the sport from the standard solution)
Residue On Ignition	≤ 0.1% (1g, platinum crucible)
Assay	≥ 99% (Dried basis as C ₁₅ H ₁₇ FN ₄ O ₃)
Storage	Store at 0-8 °C
Additional Information	Identification: 1. The filtrate responds to the qualitative tests for fluoride 2. The spectra exhibit similar intensities of absorption at the same wavelengths and wave numbers.

For Laboratory Use Only