

Chem-Impex International, Inc.

Tel: (630) 766-2112

E-mail: sales@chemimpex.com

Shipping and Correspondence:

935 Dillon Drive

Wood Dale, IL 60191

Fax: (630) 766-2218

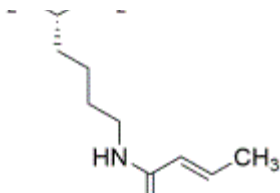
Web site: www.chemimpex.com

Manufacturing site:

825 Dillon Drive

Wood Dale, IL 60191

Product Specifications



Catalogue Number	26509
Product	<i>N</i>^ε-Crotonyl-L-lysine L-Lys(crotonyl)-OH
CAS Number	1338823-35-0
Molecular Formula	C ₁₀ H ₁₈ N ₂ O ₃
Molecular Weight	214.2

Appearance	White powder
Solubility	Clear solution (0.1 g in 6 mL Water)
Melting Point	240 - 242 °C
Water Content (Karl Fisher)	≤ 2%
Optical Rotation	[α] _D ²⁰ = 2 ± 2 ° (C=2 in water)
Infrared Spectrum	Conforms to structure
Analysis by Mass Spectra	Conforms to standard
Loss on Drying	≤ 2% (105 °C, 2h)
¹H NMR	Conforms to structure
Purity by HPLC	≥ 98%
Storage	Store at 0 - 8 °C

For Laboratory Use Only