

Chem-Impex International, Inc.

Tel: (630) 766-2112

E-mail: sales@chemimpex.com

Shipping and Correspondence:

935 Dillon Drive

Wood Dale, IL 60191

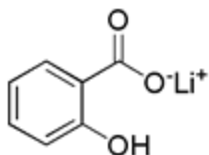
Fax: (630) 766-2218

Web site: www.chemimpex.com

Manufacturing site:

825 Dillon Drive

Wood Dale, IL 60191



Product Specifications

Catalogue Number	26494
Product	Lithium salicylate
CAS Number	552-38-5
Molecular Formula	C ₇ H ₅ LiO ₃
Molecular Weight	144.06

Appearance	White crystalline powder
Anion	Chloride (Cl ⁻) = < 0.005% Sulfate (SO ₄ ²⁻) = < 0.01%
Cation	Sodium (Na) = < 0.05% Potassium (K) = < 0.05% Calcium (Ca) = < 0.03% Magnesium (Mg) = < 0.01% Iron (Fe) = < 0.002% Lead (Pb) = < 0.01%
Purity	≥ 99%
Storage	Store at RT

For Laboratory Use Only