

# Chem-Impex International, Inc.

---

**Tel:** (630) 766-2112

**E-mail:** sales@chemimpex.com

**Shipping and Correspondence:**

935 Dillon Drive

Wood Dale, IL 60191

**Fax:** (630) 766-2218

**Web site:** www.chemimpex.com

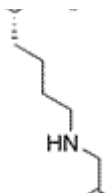
**Manufacturing site:**

825 Dillon Drive

Wood Dale, IL 60191

---

## Product Specifications



<b>Catalogue Number</b>	26431
<b>Product</b>	<b><i>N</i><sup>ε</sup>-Carboxymethyl-L-lysine</b>
<b>CAS Number</b>	Lys(Cm) 5746-04-3
<b>Molecular Formula</b>	C <sub>8</sub> H <sub>16</sub> N <sub>2</sub> O <sub>4</sub>
<b>Molecular Weight</b>	204.22

---

<b>Appearance</b>	White crystalline powder
<b>Melting Point</b>	> 296 °C (dec.)
<b>Optical Rotation</b>	[α] <sub>D</sub> <sup>20</sup> = +20 ± 1 ° (C=1 in 6M HCl)
<b>Assay by titration</b>	≥ 97%
<b>Purity by TLC</b>	≥ 99%
<b>Storage</b>	Store at 0 - 8 °C

**For Laboratory Use Only**