

# Chem-Impex International, Inc.

Tel: (630) 766-2112

E-mail: sales@chemimpex.com

Shipping and Correspondence:

935 Dillon Drive

Wood Dale, IL 60191

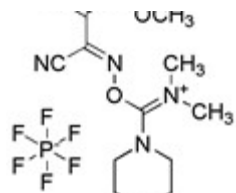
Fax: (630) 766-2218

Web site: www.chemimpex.com

Manufacturing site:

825 Dillon Drive

Wood Dale, IL 60191



## Product Specifications

Catalogue Number	26427
Product	<b>(1-Cyano-2-ethoxy-2-oxoethylideneaminoxy) dimethylamino-morpholino-carbenium hexafluorophosphate</b>
	Comu
CAS Number	1075198-30-9
Molecular Formula	C <sub>12</sub> H <sub>19</sub> N <sub>4</sub> O <sub>4</sub> •F <sub>6</sub> P
Molecular Weight	428.27
Appearance	White crystalline solid
Solubility	Clear and transparent solution
Water Content (Karl Fisher)	≤ 0.5%
Infrared Spectrum	Conforms to structure
Loss on Drying	≤ 0.5%
Purity by HPLC	≥ 98%
Storage	Store at 0 - 8 °C

**For Laboratory Use Only**