

Chem-Impex International, Inc.

Tel: (630) 766-2112

E-mail: sales@chemimpex.com

Shipping and Correspondence:

935 Dillon Drive

Wood Dale, IL 60191

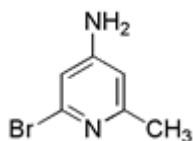
Fax: (630) 766-2218

Web site: www.chemimpex.com

Manufacturing site:

825 Dillon Drive

Wood Dale, IL 60191



Product Specifications

Catalogue Number	26405
Product	2-Bromo-6-methylpyridin-4-amine 4-Amino-2-bromo-6-methylpyridine
CAS Number	79055-59-7
Molecular Formula	C ₆ H ₇ BrN ₂
Molecular Weight	187.04
Appearance	Off-white to pale yellow solid
¹H NMR	Conforms to structure
Purity by HPLC	≥ 95%
Storage	Store at 0-8 °C

For Laboratory Use Only