

Chem-Impex International, Inc.

Tel: (630) 766-2112

E-mail: sales@chemimpex.com

Shipping and Correspondence:

935 Dillon Drive

Wood Dale, IL 60191

Fax: (630) 766-2218

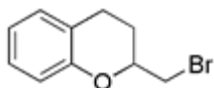
Web site: www.chemimpex.com

Manufacturing site:

825 Dillon Drive

Wood Dale, IL 60191

Product Specifications



Catalogue Number	26302
Product	2-Bromomethyl-chroman
CAS Number	852181-00-1
Molecular Formula	C ₁₀ H ₁₁ BrO
Molecular Weight	227.1

Appearance	Liquid
¹H NMR	Conforms to structure
Purity by HPLC	≥ 99%
Storage	Store at 0-8°C

For Laboratory Use Only